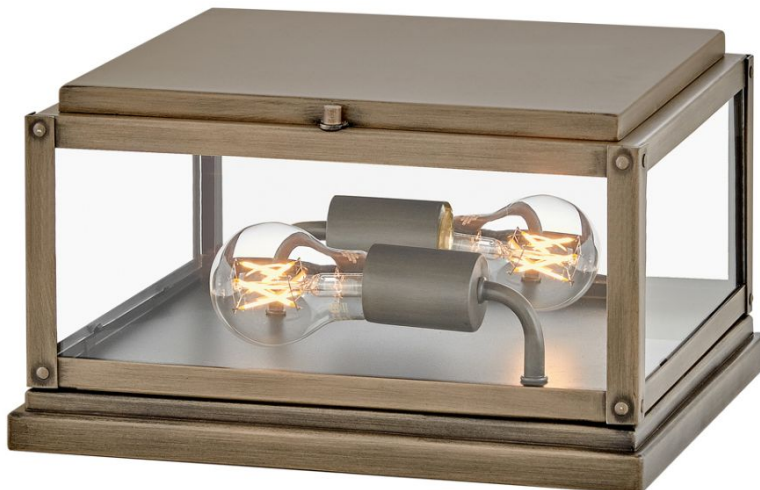


MAX

28858BU

SMALL PIER MOUNT LANTERN

Simple, clean-cut, yet captivating, Max is an instant classic, perfect for a myriad of outdoor spaces. Max's simple construction and hand-welded aluminum frame embody the modern inspiration behind the design. Surrounded by clear glass panels, it yields architectural simplicity for the touch of contemporary we crave.



DETAILS	
FINISH:	Burnished Bronze
MATERIAL:	Aluminum
GLASS:	Clear and Etched White (optional)
DIMMABLE:	YES - WITH DIMMABLE LAMP (NOT INCLUDED)

DIMENSIONS	
WIDTH:	12"
HEIGHT:	7.5"
WEIGHT:	6lb

LIGHT SOURCE	
LIGHT SOURCE:	Socketed
WATTAGE:	2-8w Med. LED, 60w Equiv.
VOLTAGE:	120v

MOUNTING	
CANOPY:	12" Sq. Base

SHIPPING	
CARTON LENGTH:	16.3
CARTON WIDTH:	16.3
CARTON HEIGHT:	13.8
CARTON WEIGHT:	11.3



PRODUCT DETAILS:

- Includes both etched white and clear glass panels
- Part of the Estate Series, a comprehensive breadth of fixtures, thoughtfully selected to meet the diverse needs of expansive estates
- Wet Rated; Suitable for outdoor settings
- Pier mount only
- Outdoor finishes carry a 2-year warranty
- Ideal for vintage filament bulbs (not included)
- Sophisticated and streamlined design, durable construction and a timeless finish complement any architectural style

HINKLEY

HINKLEY
33000 Pin Oak Parkway
Avon Lake, OH 44012

PHONE: (440) 653-5500
Toll Free: 1 (800) 446-5539

hinkley.com